

# Exploration on the Application of Display Art in Interior Environment Design

Chang Shu

Guangzhou University, Sontan College, Guangzhou, Guangdong, 511370, China

email:16383507@qq.com

**Keywords:** Art of Furnishing; Interior Environment Design; Environment; Decoration

**Abstract:** Interior furnishing design is the art of further creating the interior space atmosphere on the basis of interior decoration. With the continuous improvement of people's living standards, interior decoration art is gradually recognized and understood in the field of design. The display of artworks should be integrated with the environment, and attention should be paid not to be suppressed by the surrounding environment. Interior furnishings are an important part of interior design, which plays a vital role in creating indoor atmosphere, softening space, adjusting environmental colors and enriching spatial levels. This paper analyzes the function of furnishing art in modern interior environment design, and discusses the application of furnishing art in modern interior environment design, aiming at further enhancing the scientific application of furnishing art in interior environment design and promoting the healthy development of interior environment design in China.

## 1. Introduction

Since the industrial revolution, human beings have experienced the process of mechanized mass production, created a highly developed industrial civilization, and began to enjoy an unprecedented material life [1]. Furnishing art refers to the process in which artists and designers reasonably design interior furnishings in combination with environmental characteristics, functional requirements, aesthetic requirements and other factors [2]. Interior furnishings art is an important part of interior environment design, which plays a role in improving the interior environment and is a re-creation of the interior environment. The display artwork should be integrated with the environment, and at the same time, attention should be paid not to be suppressed by the surrounding environment, so as to achieve the effect of icing on the cake [3]. The interior design is based on a certain use function, and more importantly, it is to create a comfortable living environment, giving people a visual, psychological and even more enjoyable space environment [4]. With the development of social culture, people's requirements for indoor environmental art design are increasing. In order to meet people's different aesthetic needs, the role of furnishings in indoor environmental art design cannot be ignored.

Modern fast-paced life makes people physically and mentally nervous, and people urgently need a comfortable and warm space environment that can relax and adjust their mindset [5]. If these functional furnishings are lacking in interior design, daily work and life will be difficult. However, functional furnishings are not without ornamentation. Nowadays, many practical furniture and lamps are designed with aesthetics in mind. The use of furnishings in the design of indoor environments is usually manifested in the in-depth and meticulous design of interior art works, daily necessities, living accessories and green plants under the guidance of the overall concept of indoor environment design [6]. In the artistic design of indoor environment, the style of furnishings we choose is best in harmony with the style of indoor environment design. Furnishing art with consistent style can strengthen the aesthetic effect of indoor space and foil the overall atmosphere of indoor environment [7]. This article describes the general situation of interior furnishings art and analyzes the existing problems of interior furnishings. Through the introduction and analysis of the existing problems, it discusses the application standards and skills of furnishings art in interior environmental art design.

## 2. The Characteristics of Furnishing Art in Interior Design

Interior furnishings are also used to improve and optimize the indoor environment in the process of processing various indoor space interfaces, and are also an important part of interior space decoration. According to the function and value of interior furnishing art, interior furnishing art can be divided into decorative furnishing art and functional furnishing art. Decorative furnishings art refers to furnishings whose main purpose is decoration. Functional furnishings art refers to furnishings with a certain function as its main purpose and a certain decorative function and function at the same time. Modern minimalist style is usually simple in color and shape, but it is difficult to create a warm space environment only through the decoration of the interface. Different people's perception of beauty is generally similar, therefore, similar classical interior design may be loved everywhere [8]. However, if a similar method is used in each indoor space, it will inevitably lead to aesthetic fatigue. When designing the interior environment, the style of the furnishings and decorations can be slightly different from the interior style, and the contrast design method makes the vision have a certain impact.

The elements in the interior space are integrated, and the interior design should be combined with the nature of the space and the culture, interests, and geography of the space owner. Some designers pursue aesthetics one-sidedly, ignoring the practicality of furnishings, and doing a lot of beautiful and useless design in the interior design process. Compared with the atmosphere, the artistic conception is not only felt by people, but also attracts people and enlightens people. It is a kind of enjoyment belonging to the spiritual world. The rational use of furnishings in the design of indoor environment can achieve the purpose of setting the atmosphere and creating a good mood. The indoor environment has a good atmosphere and artistic conception, which will produce a fascinating effect, which will give people a spiritual enjoyment [9]. Artistic style is the product of history, the concentrated reflection of various spiritual aesthetics in different stages of human cultural development, and the historical aesthetic feeling of spiritual civilization. Indoor furnishings are designed and used by people, who have ideas and specific cultural backgrounds. The shape, color, pattern and texture of the display itself have certain style characteristics, so the reasonable choice of the display can strengthen the style of the indoor environment.

## 3. The Application of Furnishing Art in Interior Environment Design

### 3.1. Highlight interior design style

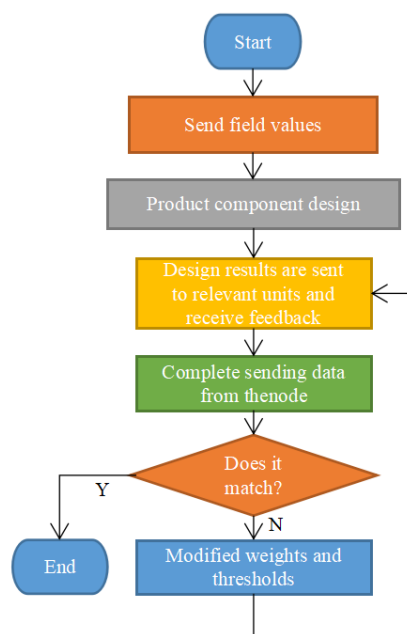


Fig.1. Cooperative design operation process

The primary pursuit of interior design is beauty and comfort, and to achieve this, we must have a unified design style. How to practice the general principle of interior design requires designers to synthesize the experience of design-related practice and knowledge. In the design process, unique elements can be added to ceilings and walls, and appropriate furniture can be added to coordinate the overall space modeling. The implementation of the general principle of interior design cannot be separated from the integration of rational thinking and perceptual thinking. More and more innovative designs and styles of interior design pay more attention to the rational application of modern science and technology. New materials and technologies should be adopted to combine sound, light, heat and science. Designers need to think about how to unify all kinds of important relationships to achieve the overall optimal effect when they carry out creative ideas. The cooperative design and operation process is shown in Figure 1.

No matter what kind of design style, it cannot be separated from furnishing art. Only by making full use of furnishing art and skillful design in indoor space can a beautiful artistic style of indoor space be created. The first development in parametric design of indoor environment is geometric modeling, which deals with basic problems such as geometry and shape representation of objects, research on graphic data structure, etc. The path density, node number and center potential are analyzed. As shown in the table 1. As the path density increases, the shortest path between nodes increases, as shown in Figure 1.

Table 1 Analysis of indoor environment parametric design structure

Network	Path density	Number of nodes	Central potential
Encounter information	1523	2265	0.736
Mutual information	2336	2124	0.568
Weighted summation	648	2536	0.672

Furnishing art plays an irreplaceable role in enhancing the semantic connotation of indoor space and beautifying the effect of indoor space. Reasonable and creative furnishings design can not only decorate the indoor space, but also set off the indoor atmosphere and create a unique artistic conception of the space environment. When designing furnishings, the first thing is to meet people's needs for its use, and then to meet its decorative needs [10]. When selecting furnishings, they should be integrated with other items in the indoor environment in terms of shape, material, color, etc. If you just use ordinary furnishings and do not plan the space, it will not have a good effect. If the main colors in the space are too uniform, you can make good use of furnishings to match colors. If furnishings are used as decorative colors or auxiliary colors in the space, you can achieve the most ideal effect.

### 3.2. Improve interior design hierarchy

With the development of modern science and technology, there are many high-rise buildings in the city, most of which are made of glass curtain walls and smooth metal materials. However, this structural space is too cold and depressing. For the general indoor space, there may not be any requirements such as semantic connotation, but for those memorial buildings such as museums, there are certain requirements and methods for the display of items. Many furnishings have their own unique cultural connotation. If they can be applied to the corresponding space, they can transcend the special aesthetic boundaries of furnishings and improve the taste and connotation of space. Family interior furnishings should be determined by the actual living conditions of a family. While reasonably arranging the necessary living facilities, there should be some space for activities. The furnishing design of any space should not only achieve the function of comfort and beautification of space, but also have certain connotation. Both public space and private living space should be rationally selected and matched according to the nature of space, space characteristics and the characteristics of users. If space is partitioned by means of furnishings under reasonable planning, the utilization rate of space can be greatly improved, and the level of interior design can be enriched and enhanced.

#### 4. Conclusions

With the rapid development of social economy, furnishing design plays a more and more important role in interior environment design. The interior furnishing design has gradually changed from the entity of interior environment design to the soul of interior decoration. Display art has a wide range, rich content and diverse forms. It is an important part of indoor environmental art design and occupies an important position in the indoor environment. The scope of display art is very wide, the content is extremely rich, and the form is also rich and diverse. As an important part of the indoor environment, furnishings play an important role in the indoor environment. Domestic designers should constantly improve their own level, break through the existing design style, and constantly make innovative designs. To improve the quality of indoor living environment, we must pay attention to the role of furnishings art in indoor environment. The development of furnishings art will surely create more colorful and suitable living space environment for people. The level of interior designers is often reflected in the furnishing design of daily necessities. This requires designers to pay more attention to the details of interior furnishings in interior environment design, thus promoting the healthy development of interior environment design.

#### Acknowledgement

In this paper, the research was sponsored by the Course Construction of “Display Art Design” (school-level quality engineering), PX-4718174.

#### References

- [1] Watts G, Khan A, Pheasant R. Influence of soundscape and interior design on anxiety and perceived tranquillity of patients in a healthcare setting. *Applied Acoustics*, 2016, 104:135-141.
- [2] Smith, Kennon M. Conditions influencing the development of design expertise: As identified in interior design student accounts. *Design Studies*, 2015, 36:77-98.
- [3] Vollmeyer J, Eberhagen F, Höger, Sigurd. Self-assembled monolayers of shape-persistent macrocycles on graphite: interior design and conformational polymorphism. *Beilstein Journal of Organic Chemistry*, 2014, 10:2774-2782.
- [4] Lee J K, Eastman C M, Lee Y C. Implementation of a BIM Domain-specific Language for the Building Environment Rule and Analysis. *Journal of Intelligent & Robotic Systems*, 2015, 79(3-4):507-522.
- [5] Li Z, Zhou X, Liu W. A similarity-based reuse system for injection mold design in automotive interior industry. *The International Journal of Advanced Manufacturing Technology*, 2016, 87(5-8):1783-1795.
- [6] Sato D, Itoh J I. Loss Minimization Design Using Permeance Method for Interior Permanent Magnet Synchronous Motor. *Electrical Engineering in Japan*, 2017, 199(4):33-43.
- [7] Chen Q, Liu G, Zhao W. Design and Comparison of Two Fault-Tolerant Interior-Permanent-Magnet Motors. *IEEE Transactions on Industrial Electronics*, 2014, 61(12):6615-6623.
- [8] Knight E C, Mahony N A, Green D J. Effects of agricultural fragmentation on the bird community in sagebrush shrubsteppe. *Agriculture, Ecosystems & Environment*, 2016, 223:278-288.
- [9] Carvalho M, Milho J, Ambrosio J. Railway occupant passive safety improvement by optimal design. *International Journal of Crashworthiness*, 2016:1-11.
- [10] Kanter S J, Petrone R G, Giegold C. A look at designing and integrating acoustics and sustainability. *The Journal of the Acoustical Society of America*, 2015, 138(3):1738-1738.